

# Exposure rating, destruction rate models and the mbbefd package

Christophe Dutang, Markus Gesmann, Giorgio Spedicato

2026-01-19

## 1 Introduction and general notation

Exposure rating is a tool for insurance pricing that allocates premium to bands of damage ratios or severity of losses. First ideas were published in (Salzmann 1963). It is often used to price non-proportional reinsurance contracts, such as excess of loss (XL) reinsurance.

Exposure rating uses the loss experience of a similar portfolio of policies to estimate the expected losses of the portfolio to be covered. The method is frequently used as a benchmark when there is no sufficient credible claims history from the client.

In this vignette, we first present the general notation and concepts of loss modelling. Secondly, we focus on destruction models implemented in the `mbbefd` package. One popular model uses the MBBEFD distribution introduced by (Bernegger 1997). Finally, we provide an example of pricing of XL contract.

### 1.1 Loss Distribution

First, let us assume we have perfect information, i.e. we know the loss distribution for a certain risk.

To keep it simple, we assume the loss distribution is log-normal with a mean ( $M$ ) of 65 and a coefficient of variation ( $CV$ ) of 30%. The corresponding log-normal parameters  $\mu$  and  $\sigma$  can be derived

$$\sigma^2 = \log(1 + CV^2), \quad \mu = \log(M) - \sigma^2/2.$$

The following chart shows the corresponding probability density curve  $f(x)$ , cumulative distribution function  $F(x)$  and survival function  $S(x) = 1 - F(x)$ .

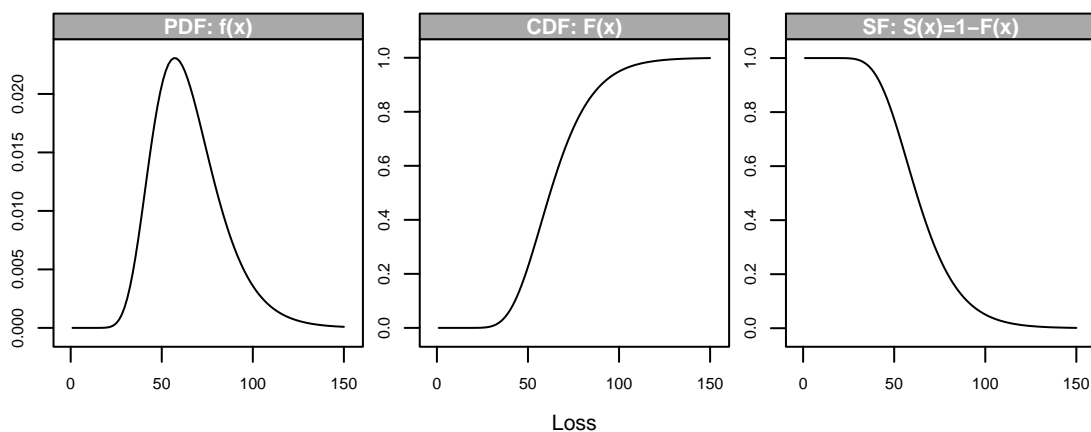


Figure 1: PDF, CDF and SF of a lognormal distribution

In the insurance context, the survival function is often called *exceedance probability function*, as it describes the probability of exceeding a certain loss.

## 1.2 Expected Loss

Let's define  $X$  as the random variable that describes the ground up loss. The expected loss (in plain English the probability weighted sum of the losses) of a positive random variable is then

$$E[X] = \int_0^{\infty} x f(x) dx.$$

## 1.3 Limited Expected Loss

Let's further assume that losses are limited by  $\alpha$  in the contract. Then the limited expected value (LEV), written as  $E[X \wedge \alpha]$ , is given as

$$E[X \wedge \alpha] = \int_0^{\alpha} x f(x) dx + \int_{\alpha}^{\infty} \alpha f(x) dx.$$

To evaluate this sum of integrals we recall that  $F(x) = \int_0^x f(x) dx$  and  $F(\infty) = 1$ . Hence

$$\int_{\alpha}^{\infty} \alpha f(x) dx = \alpha \int_{\alpha}^{\infty} f(x) dx = \alpha - \alpha F(\alpha).$$

The integration by parts theorem helps with the first part of the integral

$$\int_0^{\alpha} x f(x) dx = \alpha F(\alpha) - \int_0^{\alpha} F(x) dx.$$

Therefore, we retrieve the well-known identity

$$E[X \wedge \alpha] = \alpha - \int_0^{\alpha} F(x) dx = \int_0^{\alpha} 1 - F(x) dx = \int_0^{\alpha} S(x) dx.$$

The integral describes the area above the CDF up to  $\alpha$ , or the area under the survival function up to  $\alpha$ . In the example below the limit  $\alpha$  was set to 100.

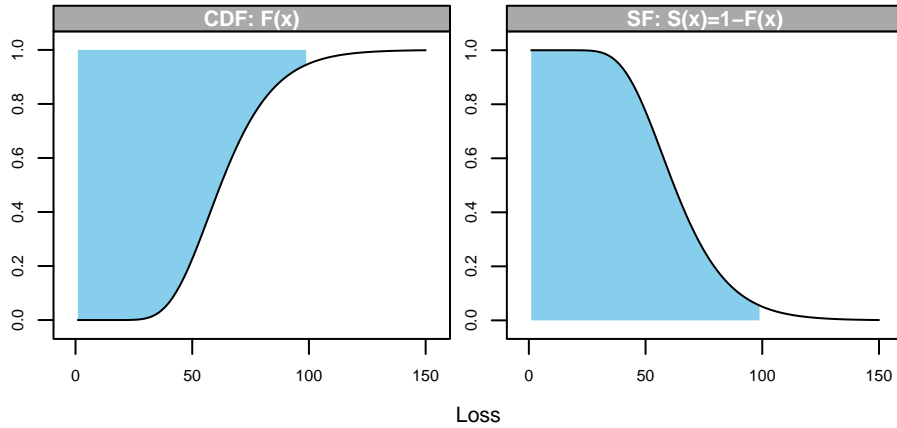


Figure 2: limited expected value

## 1.4 Loss Cost of a Layer

Suppose we want to insure the layer of claims between 80 and 100.

The expected loss cost would be the difference between the limited expected values of  $E[X \wedge 100] - E[X \wedge 80]$  and can be evaluated numerically

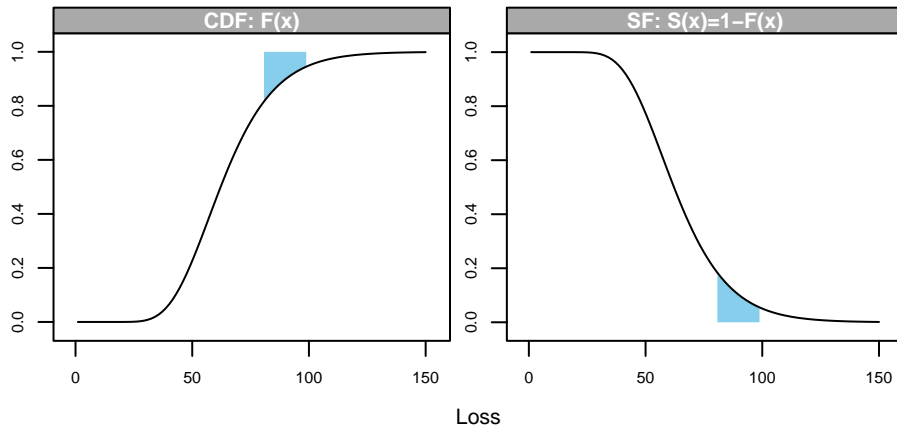


Figure 3: Loss Cost of a Layer

```
sigma <- sqrt(log(1 + 0.3^2))
mu <- log(65) - sigma^2/2
S <- function(x){ 1 - plnorm(x, mu, sigma) }
(lyr <- integrate(S, 80, 100)$value)
```

```
## [1] 2.22814
```

## 1.5 Increased Limit Factor

On the other hand the ratio of the original loss cost with a limit of 100 to a limit of 80 is called an increased limit factor (ILF):

```
(ILF <- integrate(S, 0, 100)$value / integrate(S, 0, 80)$value)
```

```
## [1] 1.03592
```

Therefore we would expect the LEV to increase by 3.5% as the limit increases from 80 to 100.

Note ILFs are often used for pricing casualty business.

## 1.6 Exposure curves

From the loss distribution we could read of the expected loss for any layer. However, often we will not have that level of information about the risk.

Instead, we will have to infer information from others risks that share similar loss characteristics as a function of the overall exposure, assuming that the relative loss size distribution is independent of the individual risk characteristic.

Hence, we will require a view on the expected full value loss cost for the overall exposure.

### 1.6.1 Normalising loss experience using TIV and MPL

To make risks more comparable we look at ratio of losses to the underlying exposure, where the exposure is given as the sum insured (SI), or better the total insured value (TIV), or perhaps as the maximum probable loss (MPL).

Other definitions and measures are also popular, such as possible maximum loss (PML), estimate maximum loss (EML), or maximum foreseeable loss (MFL).

While the TIV and SI are straightforward to understand, the other metrics can be little more challenging to assess.

Suppose we insure a big production plant with of several buildings against fire. It is unlikely that a fire will destroy the whole facility, instead it is believed that the distance between the building will ensure that fires can be contained in a local area. Hence the MPL might be only the highest value of any of those buildings.

Shifting the metric from loss amounts to damage ratio or destruction rates (loss as a % of the exposure metric) allows us to compare and benchmarks risks.

### 1.6.2 Analysing deductibles

Most insurance policies are written with a deductible, so that the insured will cover the first \$X of the losses.

Thus, the reinsurer needs to understand, by how much the claims burden is reduced for a given deductible.

From the previous section we have learned how to calculate the limited expected value, which is the loss cost to the insured.

The exposure curve (or also called *first loss curve* or *original loss cure* ) is defined as the proportion of the LEV for a given deductible  $d$  compared to the overall expected claims cost  $E[X]$

$$G(d) = \frac{E[X \wedge d]}{E[X]}.$$

For our example, using a log-normal distribution and a MPL of 200 we get

```
MPL <- 200
ExpectedLoss <- 65
Deductible <- seq(0, MPL, 1)
G <- sapply(Deductible, function(x){
  LEVx <- integrate(S, 0, x)$value
  LEVx/ExpectedLoss
})
plot(Deductible/MPL, G,
     t="l", bty="n", lwd=1.5,
     main="Exposure Curve",
     xlab="Deductible as % of MPL",
     ylab="% of expected loss paid by insured",
     xlim=c(0,1), ylim=c(0,1))
abline(a=0, b=1, lty=2)
```

The steepness of the curve is related to the severity of the loss distribution. The closer the curve is to the diagonal the greater the proportion of large loss.

If all losses were total losses then the exposure curve would be identical with the diagonal.

Different perils and exposures will have different exposure curves. Well known exposure curves are those used by Swiss Re and Lloyd's.

## 2 Destruction rate models

### 2.1 Classic distributions

As already mentioned, the exposure curve function of  $X$  is defined as the ratio of the limited expected value and the expectation. Since the loss  $X$  is a positive random variable, the exposure curve is

$$G_X(d) = \frac{\int_0^d (1 - F_X(x)) dx}{\int_0^1 (1 - F_X(x)) dx}.$$

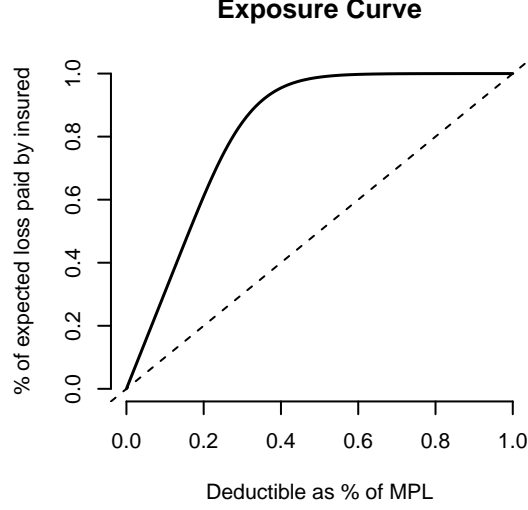


Figure 4: Exposure curve

Note that the exposure curve is a concave function for  $d \in ]0, 1[$ .

There is a direct link between the distribution function and the exposure curve. Since

$$F_X(x) = \left(1 - \frac{G'_X(x)}{G'_X(0)}\right) \mathbb{1}_{[0,1[}(x) + \mathbb{1}_{[1,+\infty[}(x),$$

defining the exposure curve or the distribution function is equivalent. The exposure curve is also a concave increasing function, see e.g. (Antal 2003).

### 2.1.1 Uniform distribution

The most trivial example of exposure curve is obtained for the uniform distribution on  $I$ . We consider  $F_X(x) = x$  leading to

$$G_X(d) = d(2 - d).$$

### 2.1.2 Beta distribution

A more interesting example is obtained for the Beta distribution on  $I$  (e.g. (Johnson, Kotz, and Balakrishnan 1994) for which the density is  $f_X(x) = x^{a-1}(1-x)^{b-1}/\beta(a, b)$  for  $x \in ]0, 1[$  and  $a, b > 0$  where  $\beta(., .)$  denotes the beta function, see e.g. (Olver et al. 2010). The distribution function is obtained in terms of the incomplete beta ratio function  $F_X(x) = \beta(x; a, b)/\beta(a, b) = I(x; a, b)$ . We get

$$G_X(d)\beta(a, b; x) - \frac{x^a(1-x)^b}{a\beta(a, b)} + x(1 - \beta(a, b; x))\frac{a+b}{a},$$

where  $\beta(., ., .)$  denotes the incomplete beta function.

## 2.2 One-inflated distributions

### 2.2.1 Characterizations

Let us consider a continuous distribution function  $F_0$  of a random variable  $X_0$ . The corresponding distribution function of the one-inflated random variable  $X_1$  is

$$F_1(x) = (1 - p_1)F_0(x) + p_1\mathbb{1}_{[1,+\infty[}(x).$$

There is no density but an improper density  $(1 - p)F'_0(x)$  and a probability mass  $p_1$  at  $x = 1$ .

### 2.2.2 The one-inflated beta distribution

We consider the one-inflated beta distribution. Using Section 2.1.2, we obtain the following distribution function

$$F_X(x) = \begin{cases} 0 & \text{if } x < 0 \\ I(x; a, b)(1 - p_1) & \text{if } 0 \leq x < 1 \\ 1 & \text{if } x \geq 1 \end{cases}$$

where  $I(x; a, b)$  denotes the incomplete beta ratio function. This leads to a non-null probability at  $x = 1$ ,  $P(X = 1) = p_1$ . The improper density function is

$$\tilde{f}_X(x) = (1 - p_1) \frac{x^{a-1}(1-x)^{b-1}}{\beta(a, b)}.$$

The expectation is

$$E(X) = p_1 + (1 - p_1) \frac{a}{a + b}.$$

The exposure curve is

$$G_X(d) = \frac{(1 - p_1) \left( 1 - I(d; a, b) \frac{b}{a+b} - \frac{d^a(1-d)^b}{(a+b)\beta(a, b)} \right) + p_1 d}{p_1 + (1 - p_1) \frac{a}{a+b}}.$$

## 2.3 The MBBEFD distribution, first parametrization

We denote this first parametrization by MBBEFD( $a, b$ ). We define the parameter domain  $\mathcal{D}_{a,b}$  as

$$\mathcal{D}_{a,b} = \{(a, b) \in \mathbb{R}^2, a + 1 > 0, a(1 - b) > 0, b > 0\} \cup \{(a, b), a = +\infty, b < 1\}. \quad (1)$$

Let us note that this domain includes two particular sets  $\mathcal{D}_{a,1} = \{(a, 1), a + 1 > 0\}$  and  $\mathcal{D}_{0,b} = \{(0, b), b > 0\}$ .

### 2.3.1 Characterization by the exposure curve

The MBBEFD distribution is defined by the following exposure curve for  $(a, b) \in \mathcal{D}_{a,b}$

$$\forall x \in I, G_X(x) = \begin{cases} \frac{\ln(\frac{a+b^x}{a+1})}{\ln(\frac{a+b}{a+1})} & \text{if } a(1 - b) > 0 \\ \frac{1-b^x}{1-b} & \text{if } a = +\infty \text{ and } b < 1 \\ x & \text{if } a = 0 \text{ or } b = 1. \end{cases} \quad (2)$$

The two special cases of  $a(1 - b) = 0$  correspond to  $\mathcal{D}_{a,1}$  and  $\mathcal{D}_{0,b}$ . Note that the denominator is a normalizing constant to ensure the term belongs to  $[0, 1]$ .

### 2.3.2 Distribution, density and quantile functions

Differentiating  $G_X$ , we obtain the following distribution function for  $(a, b) \in \mathcal{D}_{a,b}$

$$\forall x \in I, F_X(x) = \begin{cases} \left( 1 - \frac{(a+1)b^x}{a+b^x} \right) \mathbb{I}_{[0,1[}(x) + \mathbb{I}_{[1,+\infty[}(x) & \text{if } a(1 - b) > 0 \\ (1 - b^x) \mathbb{I}_{[0,1[}(x) + \mathbb{I}_{[1,+\infty[}(x) & \text{if } a = +\infty \text{ and } b < 1 \\ \mathbb{I}_{[1,+\infty[}(x) & \text{if } a = 0 \text{ or } b = 1. \end{cases} \quad (3)$$

Note that the MBBEFD distribution is a mixed-type distribution with mass probability at  $x = 1$

$$P(X = 1) = \frac{(a + 1)b}{a + b} = p_{a,b}, \quad (4)$$

which equals to 1 when  $a(1 - b) = 0$ . In other words, for  $\mathcal{D}_{a,1}$  and  $\mathcal{D}_{0,b}$ ,  $X$  has a Dirac distribution at  $x = 1$ . When  $a = +\infty$ , the total loss probability is  $P(X = 1) = b$ .

For  $a(1-b) > 0$ , the improper density function is

$$\tilde{f}_X(x) \begin{cases} -\frac{a(a+1)b^x \ln(b)}{(a+b^x)^2} \mathbb{1}_{[0,1[}(x) & \text{if } a(1-b) > 0 \\ -\ln(b)b^x \mathbb{1}_{[0,1[}(x) & \text{if } a = +\infty \text{ and } b < 1 \\ 0 & \text{if } a = 0 \text{ or } b = 1. \end{cases} \quad (5)$$

The quantile function is

$$\forall p \in [0, 1], \quad q_X(p) = \begin{cases} \frac{\ln\left(\frac{(1-p)a}{a+p}\right)}{\ln(b)} \mathbb{1}_{[0,1-p_{a,b}[}(p) + \mathbb{1}_{[1-p_{a,b},1]}(p) & \text{if } a(1-b) > 0 \\ \frac{\ln(1-p)}{\ln(b)} \mathbb{1}_{[0,1-b[}(p) + \mathbb{1}_{[1-b,1]}(p) & \text{if } a = +\infty \text{ and } b < 1 \\ \mathbb{1}_{[0,1]}(p) & \text{if } a = 0 \text{ or } b = 1. \end{cases} \quad (6)$$

### 2.3.3 Moments

Using the definition of the exposure curve, we have  $E(X) = 1/G'_X(0)$ . The expectation for MBBEFD( $a, b$ ) is

$$E(X) = \frac{\ln\left(\frac{a+b}{a+1}\right)}{\ln(b)}(a+1).$$

When  $a = 0$  or  $b = 1$ , the expectation is simply  $E(X) = 1$ .

## 2.4 The MBBEFD distribution, second parametrization

### 2.4.1 Parameter domain

For fitting purposes and for verifying parameter constraints, (Bernegger 1997) proposed a second parametrization MBBEFD( $g, b$ ). Using the following parameter  $g = 1/p_{a,b}$ , it is possible to reformulate the MBBEFD( $a, b$ ). That is

$$g = \frac{a+b}{(a+1)b} \Leftrightarrow a = \frac{(g-1)b}{1-gb}.$$

So  $g \geq 1$  guarantees that  $\frac{a+b}{(a+1)b} \in [0, 1]$ , in addition to  $b > 0$ . The special case  $g = 1$  leading to a Dirac distribution at  $x = 1$  corresponds to  $a(1-b) = 0$  in the previous parametrization. The parameter domain is

$$\tilde{\mathcal{D}}_{g,b} = \{(g, b) \in \mathbb{R}^2, b > 0, g \geq 1\}.$$

### 2.4.2 Characterization by the exposure curve

The exposure curve is defined for  $x \in [0, 1]$  as

$$G_X(x) = \begin{cases} \frac{\ln\left(\frac{(g-1)b}{1-b} + \frac{1-gb}{1-b}b^x\right)}{\ln(gb)} & \text{if } g > 1, b \neq 1, b \neq 1/g \\ \frac{\ln(1+(g-1)x)}{\ln(g)} & \text{if } g > 1, b = 1 \\ \frac{1-b^x}{1-b} & \text{if } g > 1, bg = 1 \\ x & \text{if } g = 1 \text{ or } b = 0 \end{cases} \quad (7)$$

Note that the case  $g > 1, bg = 1$  implies  $g = 1/b, b < 1$ .

### 2.4.3 Distribution, density and quantile functions

The resulting distribution function is

$$F_X(x) = \begin{cases} \left(1 - \frac{1-b}{(g-1)b^{1-x}+1-gb}\right) \mathbb{1}_{[0,1[}(x) + \mathbb{1}_{[1,+\infty[}(x) & \text{if } g > 1, b \neq 1, b \neq 1/g \\ \left(1 - \frac{1}{1+(g-1)x}\right) \mathbb{1}_{[0,1[}(x) + \mathbb{1}_{[1,+\infty[}(x) & \text{if } g > 1, b = 1 \\ (1-b^x) \mathbb{1}_{[0,1[}(x) + \mathbb{1}_{[1,+\infty[}(x) & \text{if } g > 1, bg = 1 \\ \mathbb{1}_{[1,+\infty[}(x) & \text{if } g = 1 \text{ or } b = 0 \end{cases} \quad (8)$$

As in the previous parametrization, there is a non-null probability at  $x = 1$ ,

$$P(X = 1) = 1/g. \quad (9)$$

The improper density function is for  $x \in ]0, 1[$

$$\tilde{f}_X(x) = \begin{cases} -\frac{(1-b)(g-1)\ln(b)b^{1-x}}{((g-1)b^{1-x}+1-gb)^2} & \text{if } g > 1, b \neq 1, b \neq 1/g \\ \frac{g-1}{(1+(g-1)x)^2} & \text{if } g > 1, b = 1 \\ -\ln(b)b^x & \text{if } g > 1, bg = 1 \\ 0 & \text{if } g = 1 \text{ or } b = 0 \end{cases} \quad (10)$$

The quantile function is

$$\forall p \in [0, 1], \quad q_X(p) = \begin{cases} \left(1 - \frac{\ln\left(\frac{gb-1}{g-1} + \frac{1-b}{(1-p)(g-1)}\right)}{\ln(b)}\right) \mathbb{I}_{[0, 1-1/g[}(p) + \mathbb{I}_{[1-1/g, 1]}(p) & \text{if } g > 1, b \neq 1, b \neq 1/g \\ \frac{p}{(1-p)(g-1)} \mathbb{I}_{[0, 1-1/g[}(p) + \mathbb{I}_{[1-1/g, 1]}(p) & \text{if } g > 1, b = 1 \\ \frac{\ln(1-p)}{\ln(b)} \mathbb{I}_{[0, 1-1/g[}(p) + \mathbb{I}_{[1-1/g, 1]}(p) & \text{if } g > 1, bg = 1 \\ \mathbb{I}_{[0, 1]}(p) & \text{if } g = 1 \text{ or } b = 0 \end{cases} \quad (11)$$

#### 2.4.4 Moments

Let us compute the first two moments.

$$E(X) = 1/G'_X(0) = \begin{cases} \frac{\ln(gb)(1-b)}{\ln(b)(1-gb)} & \text{if } g > 1, b \neq 1, b \neq 1/g \\ \frac{\ln(g)}{g-1} & \text{if } g > 1, b = 1 \\ \frac{b-1}{\ln(b)} & \text{if } g > 1, bg = 1 \\ 1 & \text{if } g = 1 \text{ or } b = 0 \end{cases}$$

### 3 Fitting methods and pricing examples

#### 3.1 Fitting methods: MLE and TLMME

We consider two fitting methods, namely the maximum likelihood estimation (MLE) and the total-loss-moment matching estimation. Both methods are implemented in the `fitDR` function of the `mbbefd` package.

As its name suggest, the maximum likelihood function consists in maximizing the likelihood function defined as

$$\mathcal{L}(\theta, x_1, \dots, x_n) = \prod_{i=1}^n f_X(x_i),$$

where  $f_X$  denotes the density of the loss random variable  $X$  and  $\theta$  is the parameter vector. When  $X$  is a continuous non-inflated distribution,  $f_X$  is the usual density function (obtained by differentiating the distribution function) when  $X$  is a mixed-type distribution with a non-null probability  $P(X = 1)$ ,  $f_X$  is the product of  $P(X = x)\mathbb{I}_{x=1}$  and  $F'_X(x)\mathbb{I}_{x \neq 1}$ .

For example when considering the beta distribution, the likelihood function to be maximized is

$$\mathcal{L}((a, b), x_1, \dots, x_n) = \prod_{i=1}^n \frac{x_i^{a-1}(1-x_i)^{b-1}}{\beta(a, b)}.$$

The total-loss-moment matching estimation consists in matching the total loss and the first moments of a distribution. That is we solve the system

$$\begin{cases} P(X = 1; \theta) = tl_n \\ E(X; \theta) = \bar{x}_n \\ \vdots \\ E(X^k; \theta) = m_{n,k} \end{cases} \quad \text{where} \quad \begin{cases} tl_n = \frac{1}{n} \sum_{i=1}^n \mathbb{I}_{x_i=1}, \\ \bar{x}_n = \frac{1}{n} \sum_{i=1}^n x_i, \\ m_{n,k} = \frac{1}{n} \sum_{i=1}^n (x_i)^k. \end{cases}$$



The number of equation  $k + 1$  equals the number of parameters. This methods is relevant only for one-inflated distributions as for classic continuous distributions such as the beta distribution we know that  $P(X = 1) = 0$ .

The `fitDR` function of the `mbbefd` package returns an object of class "DR" inheriting from the "fitdist" class for which generic functions are available `print`, `plot`, `summary`, `gofstat`. There is also a bootstrap procedure implemented in the `bootDR` function.

## 3.2 Examples

Let us fit some distributions with a simulated dataset based on a mixture of two distributions (regular beta and `mbbefd`).

```
set.seed(123456)
x <- c(rbeta(50, 3, 1/2), rmbbefd(50, 1/2, 1/10))
f1 <- fitDR(x, "mbbefd", method="mle")
summary(f1)

## Fitting of the distribution ' mbbefd ' by maximum likelihood
## Parameters :
##      estimate Std. Error
## a 0.035971394 0.015716485
## b 0.009889808 0.004803355
## Loglikelihood: -39.69146   AIC:  83.38292   BIC:  88.59326
## Correlation matrix:
##           a           b
## a 1.0000000 0.9093313
## b 0.9093313 1.0000000

b1 <- bootDR(f1, niter=25)
summary(b1)
```

```
## Parametric bootstrap medians and 95% percentile CI
##      Median      2.5%      97.5%
## a 0.037254852 0.013401781 0.09102473
## b 0.009932895 0.002825171 0.02565262
##
## The estimation method converged only for 24 among 25 iterations
```

The graph correspond respectively to the histogram (and empirical density) against the fitted density and a two-dimensional level curve and scatter plot for bootstrap parameters.

As in the `fitdistrplus` package, we can compare multiple fits on the same graph or with the same statistics. We just have to pass a list of "DR" objects.

```
f2 <- fitDR(x, "oibeta", method="mle")
f3 <- fitDR(x, "oiunif", method="mle")

## Warning in fitdist(x, distr = dist, method = method, start = start, calcvcov =
## TRUE, : The doiunif function should return a vector of with NaN values when
## input has inconsistent values and not raise an error

gofstat(list(f1, f2, f3))

## Goodness-of-fit statistics
##                               1-mle-mbbefd 2-mle-oibeta 3-mle-oiunif
## Kolmogorov-Smirnov statistic    0.140000    0.140000    0.2154661
## Cramer-von Mises statistic      0.271557    0.1414873    1.7856663
## Anderson-Darling statistic      Inf          Inf          Inf
##
```

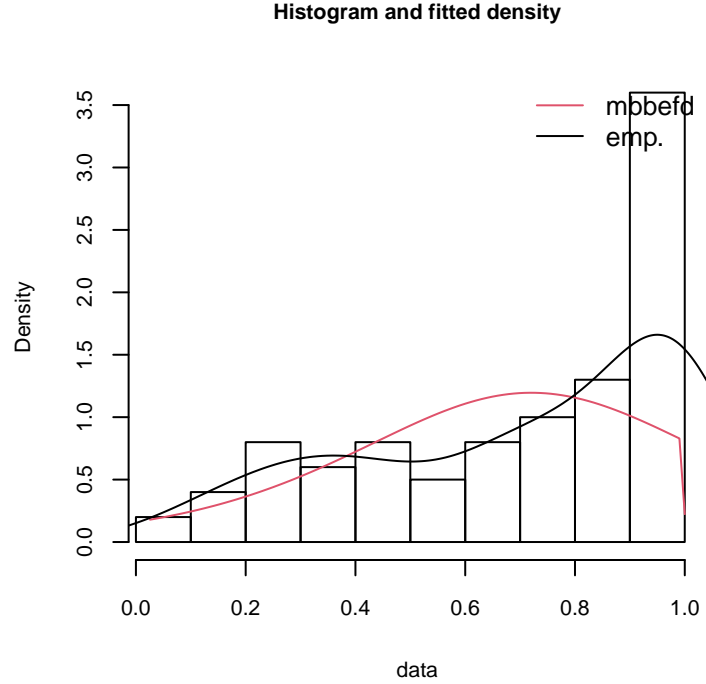


Figure 5: Histogram, fitted density

```
## Goodness-of-fit criteria
##
## 1-mle-mbbefd 2-mle-oibeta 3-mle-oiunif
## Akaike's Information Criterion      83.38292      41.84037      82.99270
## Bayesian Information Criterion      88.59326      49.65588      85.59787
```

Of course, we can also compare the different fitted exposure curves using the function `eccomp`. That is

### 3.3 Computation of premium rate (example)

The following example data is taken from the earlier Swiss Re technical paper above. It is the aim to find the risk premium for a per risk WXL cover (fire only) with the limits

CHF 3,500,000 xs CHF 1,500,000.

The total gross net premium income (GNPI) is CHF 95,975,000 in 2004, with an expected loss ratio of 55%. Therefore we have a view on the mean expected loss cost.

The risk profile given by the cedant is from the year 2002. However, instead of re-indexing the historical data to 2004, we back-index the data to 2002 with a factor of  $457/550 = 0.83$ :

CHF 2,908,182 xs CHF 1,246,364

The data presented below is from the client, with pre-selected exposure curves, in this case the parameter  $c$  of the MBBEFD curve.

The policies have been grouped into different exposure bands. The mean MPL is simply the average of the lower and upper band.

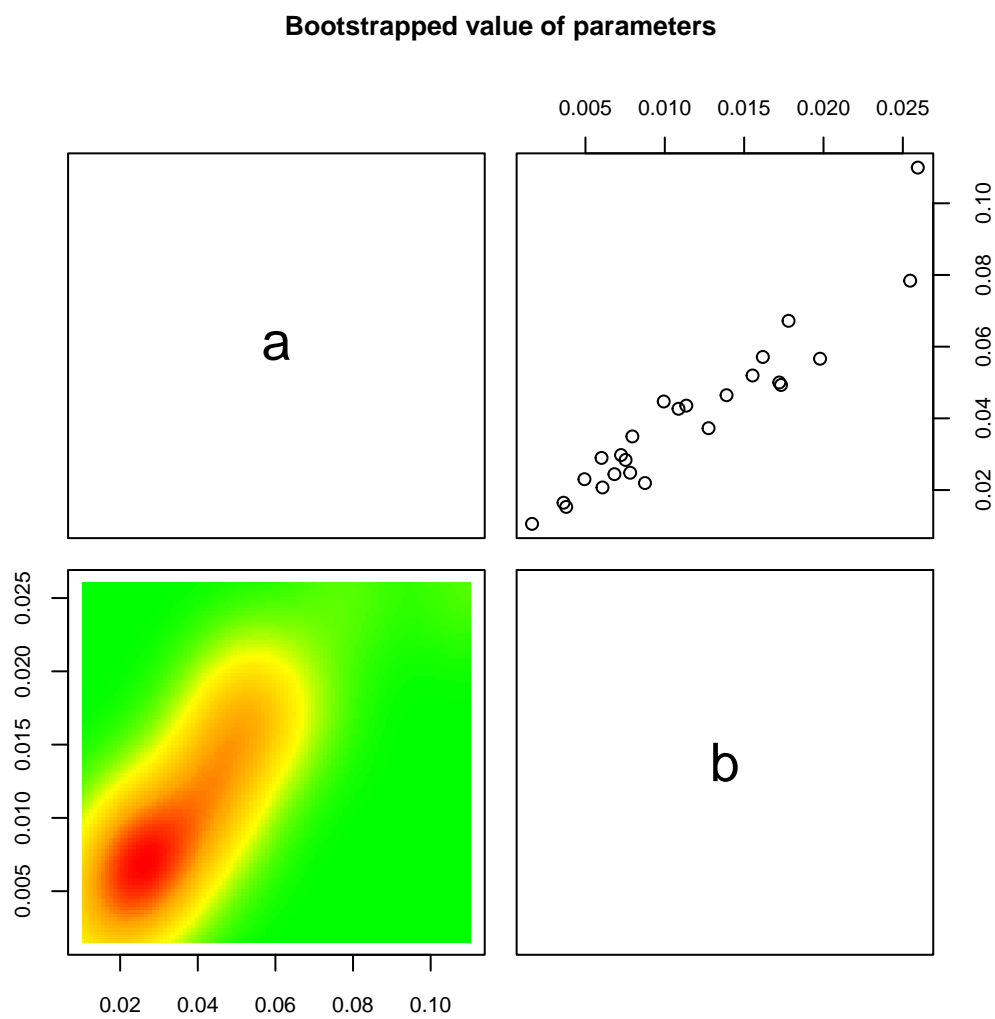


Figure 6: Bootstrap heatmap and scatter plot

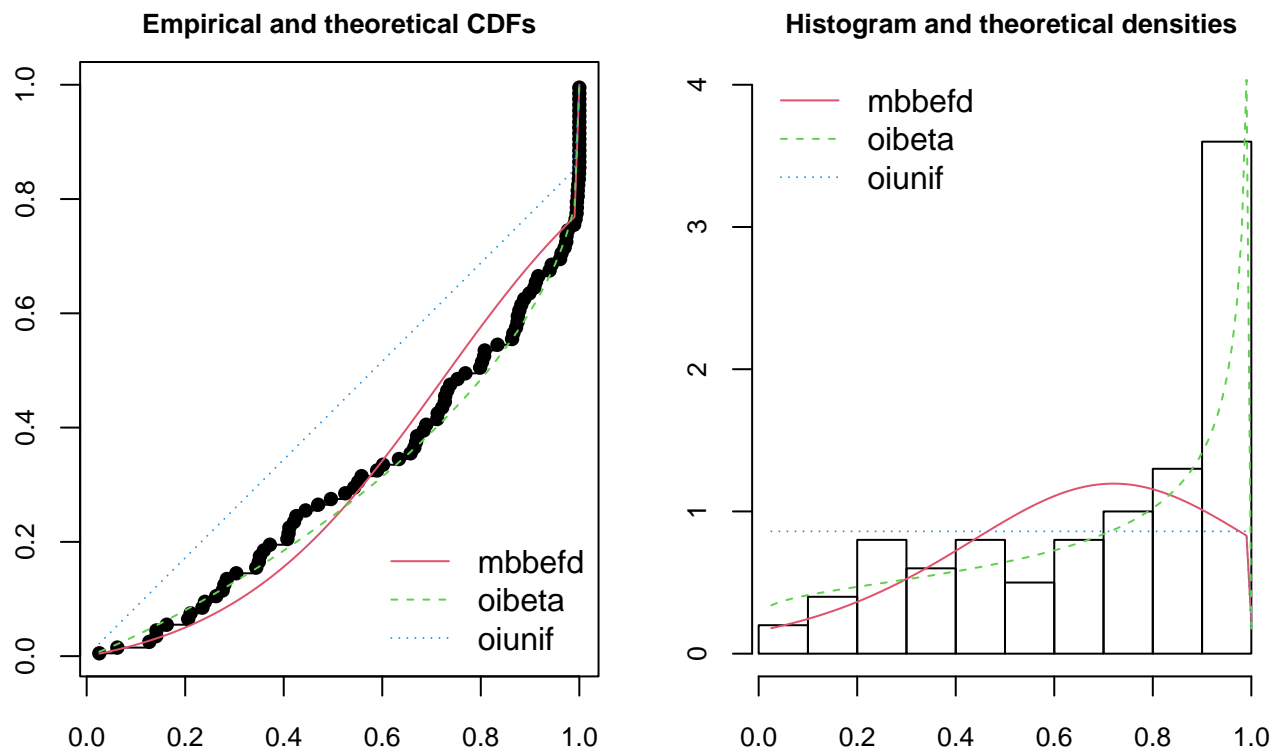


Figure 7: comparison on cdf and pdf plots

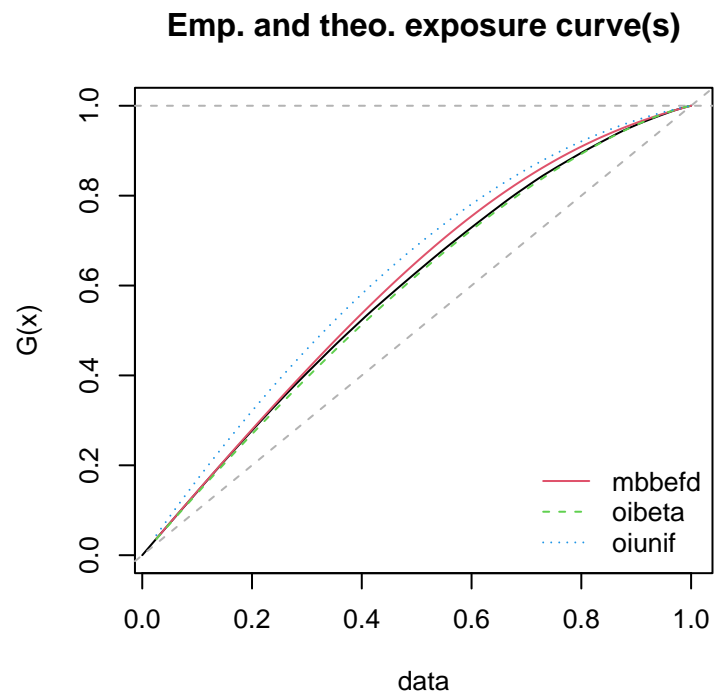


Figure 8: Comparison on exposure curves

Max MPL '000	Mean MPL Gross Loss '000	Gross Premium '000	Exposure Curve Parameter c
150	75	33,434	1.5
250	200	14,568	1.5
400	325	6,324	1.5
600	500	4,584	2
800	700	3,341	2
1,000	900	1,405	2
1,250	1,125	1,169	3
1,500	1,375	683	3
1,750	1,625	613	3
2,000	1,875	554	3
2,500	2,250	700	4
3,000	2,750	552	4
4,000	3,500	1,194	4
5,500	4,750	1,490	4
9,000	7,250	4,177	4
12,500	10,750	3,527	4
18,000	15,250	3,249	4
24,000	21,000	2,712	4
36,000	30,000	2,588	4
48,000	42,000	1,988	4
72,000	60,000	657	4
90,000	81,000	1,918	4

In order to use the exposure curves we need the expected loss and the deductible as % of the MPL.

We consider three scenarios in the following subsections.

### 3.3.1 Losses below deductible

Losses with a maximum MPL below the deductible are not relevant and hence no reinsurance premium needs to be calculated.

### 3.3.2 Losses above deductible, but below limit

As an example we use the band that has a maximum MPL of CHF 4m, with a mean MPL gross loss of CH 3.5m and gross premium of CH 1.194m.

The client would retain  $1,246/3,500 = 35.6\%$  of the maximum MPL. Using our exposure curve we can read of that this would reduce our expected claims burden by 35.6%.

Therefore the reinsurance premium for this band is  $1,194k \cdot 20.5\% = 244.8k$ .

### 3.3.3 Losses above limit

Here we select the band with a maximum MPL of CHF 90m and a mean gross MPL of CHF 81m. Because of the limit of CHF 4154.5 only that amount matters. From the exposure curve we can read of again the average proportion of loss paid by the cedant 0.8%.

To calculate the premium we first have to derive the proportion of premium that is attached to the risk below the limit:  $4,155k/8,100k \cdot 1,918k = 98.4k$ .

Multiplying the premium with the reinsurer's share of the loss gives us a premium of CHF 23.4k.

### 3.3.4 Premium Rate

For the overall portfolio we can calculate the premium rate, using the expected loss ratio of 55%:

```
Premium_rate <- function(Deductible, Limit, MaxMPL,
                          MeanMPL, GrossPremium, C, ULR){
  DedPerMPL <- Deductible / ifelse(MaxMPL < Deductible, Deductible,
                                   ifelse(MaxMPL < Limit, MeanMPL, Limit))
  LossShare <- 1 - apply(cbind(DedPerMPL, C), 1,
                        function(x){
                          ecMBBEFD(x[1],
                                     b=swissRe(x[2])['b'],
                                     g=swissRe(x[2])['g'])
                        })
  NetPremium <- GrossPremium * ifelse(MaxMPL < Limit, 1,
                                     Limit/MaxMPL)
  XL_Premium <- NetPremium * LossShare
  # Rate on Line
  sum(XL_Premium)/sum(NetPremium)*ULR
}

pr <- Premium_rate(Deductible = D,
                   Limit = L,
                   MaxMPL = ClientData$MaxMPL,
                   MeanMPL = ClientData$MeanMPLGrossLoss,
                   GrossPremium = ClientData$GrossPremium,
                   C=ClientData$ExposureCurve, ULR=0.55)
```

Applying the function to our data we get a premium rate of 1.47%. Differences to the Swiss Re paper result from rounding errors.

## References

- Antal, P. 2003. “Quantitative Methods in Reinsurance.” Swiss Re.
- Bernegger, S. 1997. “The Swiss Re Exposure Curves and the MBBEFD Distribution Class.” *ASTIN Bulletin* 27 (1): 99–111. <https://doi.org/10.2143/AST.27.1.563208>.
- Johnson, N., S. Kotz, and N. Balakrishnan. 1994. *Continuous Univariate Distributions*. Vol. 2. Wiley Interscience.
- Olver, F. W. J., D. W. Lozier, R. F. Boisvert, and C. W. Clark, eds. 2010. *NIST Handbook of Mathematical Functions*. Cambridge University Press. <https://dlmf.nist.gov/>.
- Salzmann, Ruth E. 1963. “Rating by Layer of Insurance.” *Proceedings of the Casualty Actuarial Society* L: 15–26. [https://www.casact.org/sites/default/files/database/proceed\\_proceed63\\_63015.pdf](https://www.casact.org/sites/default/files/database/proceed_proceed63_63015.pdf).