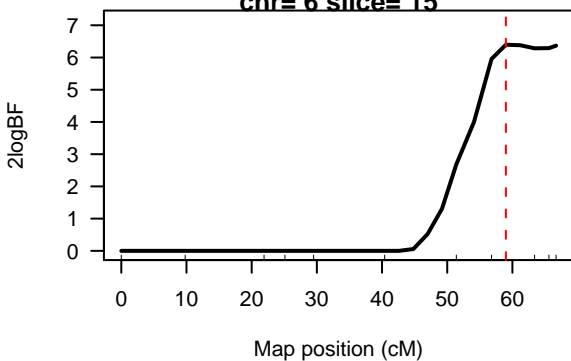
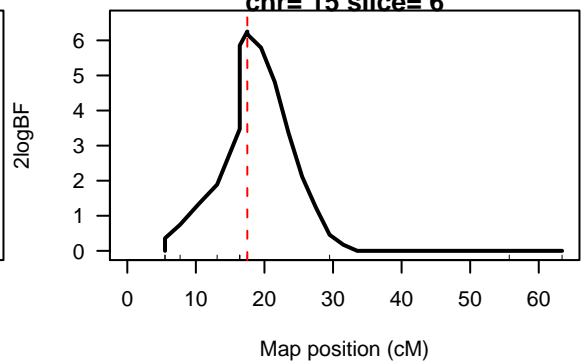


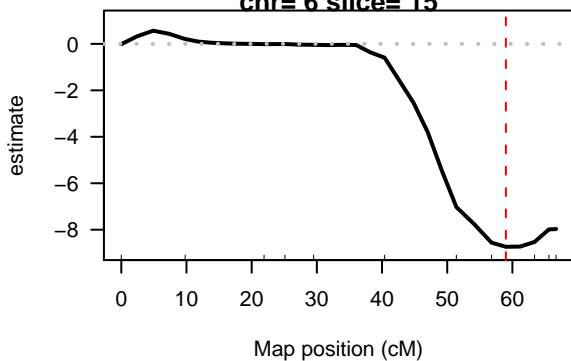
2logBF of for epistasis
chr= 6 slice= 15



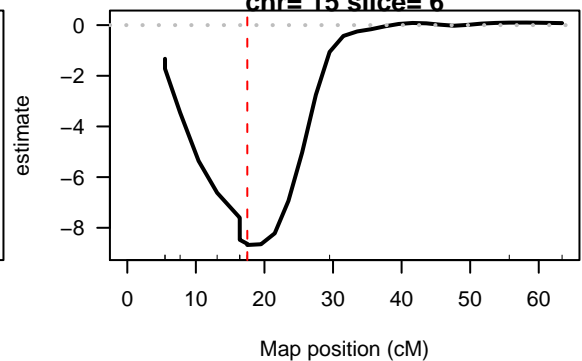
2logBF of for epistasis
chr= 15 slice= 6



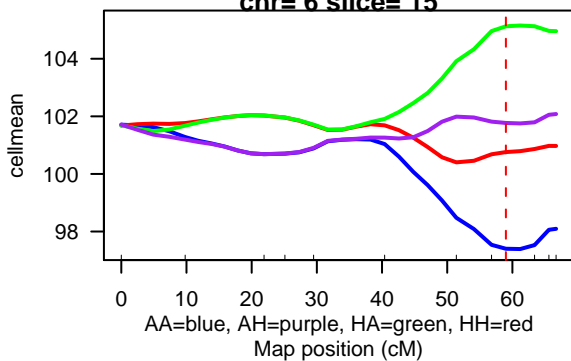
estimate of for epistasis
chr= 6 slice= 15



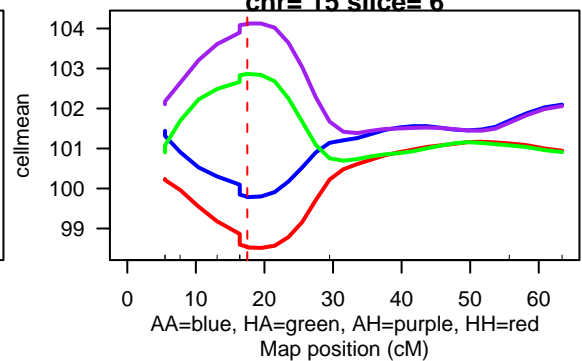
estimate of for epistasis
chr= 15 slice= 6



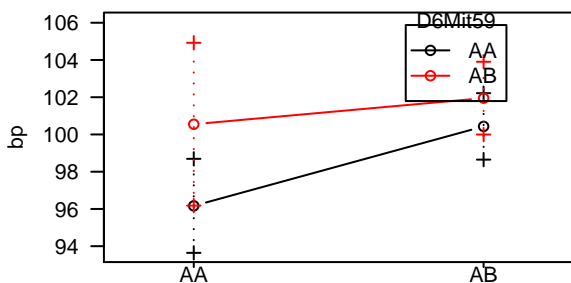
cellmean of for effects
chr= 6 slice= 15



cellmean of for effects
chr= 15 slice= 6



chr 6, chr 15



chr 15, chr 6

